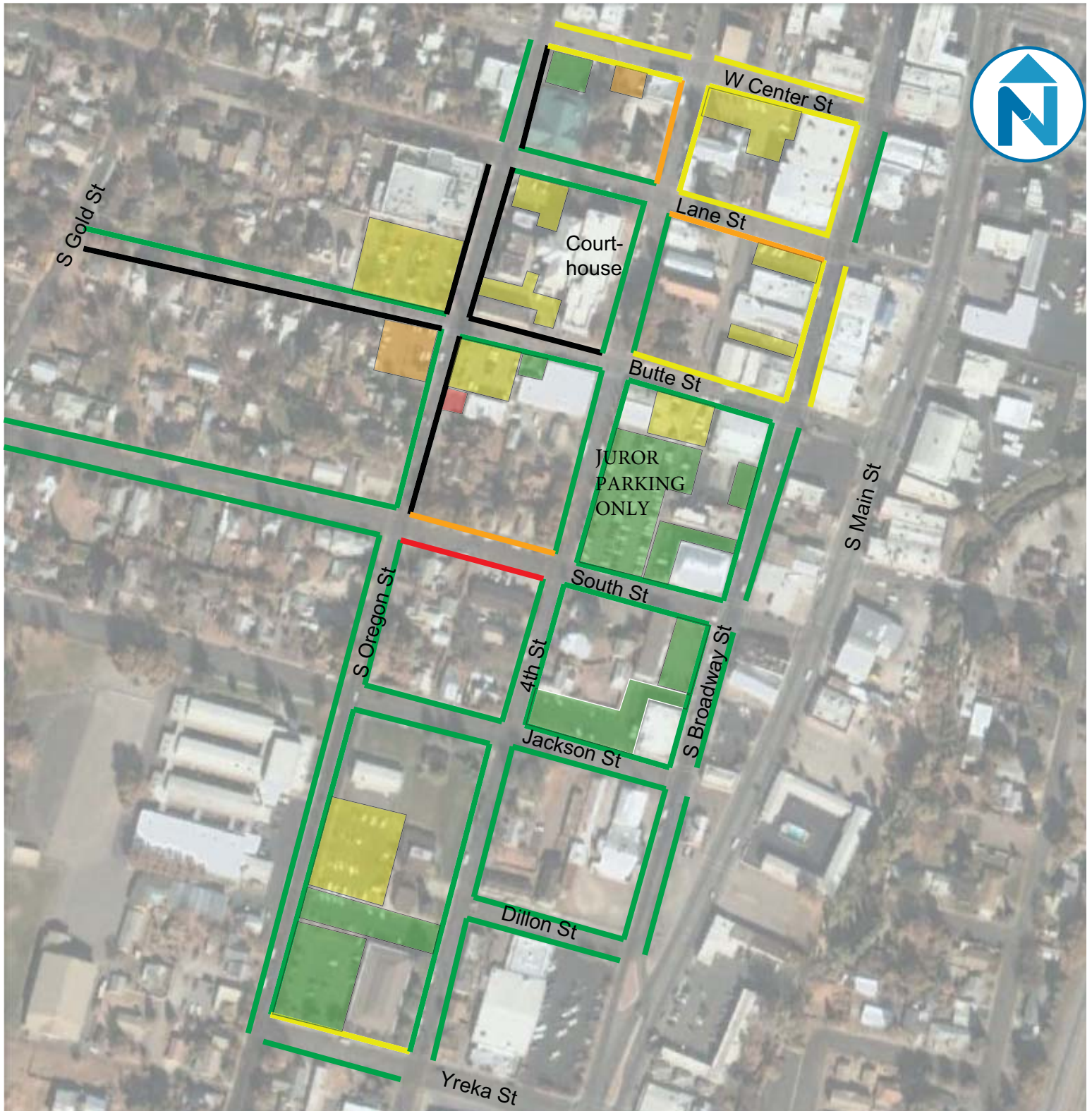


# Peak Hour Parking Occupancy



Aerial Image Source: Google Maps

On-Street		Off-Street	
	public		public
	limited access		limited access
	no access		no access
	no access		no access
	No Parking		No Parking

Note: Street parking immediately adjacent to the Courthouse is limited to 2 hours. If your business will be longer than 2 hours, there are surface parking lots near the Courthouse available for your use.

JUROR PARKING IS NOTED ON THIS MAP.